
International Academy of Collaborative Professionals

Practice Survey

All Cases

July, 2010



Table of Contents

Background and Methodology	2
Detailed Findings	4
Case Information	5
Collaborative Case Professionals	15
Children	23
Participant Demographic Profile	26



Background and Methodology



Background

- **This report presents results for the IACP Practice Study. This study is a comprehensive collection of data that has been input by a core professional for cases conducted under collaborative law. One entry is made for each case.**
- **This report presents the results for all cases combined. This primarily includes cases from**
 - **The United States**
 - **Canada**
 - **United Kingdom**
- **The total number of All Reported Cases is: 933**



Detailed Findings



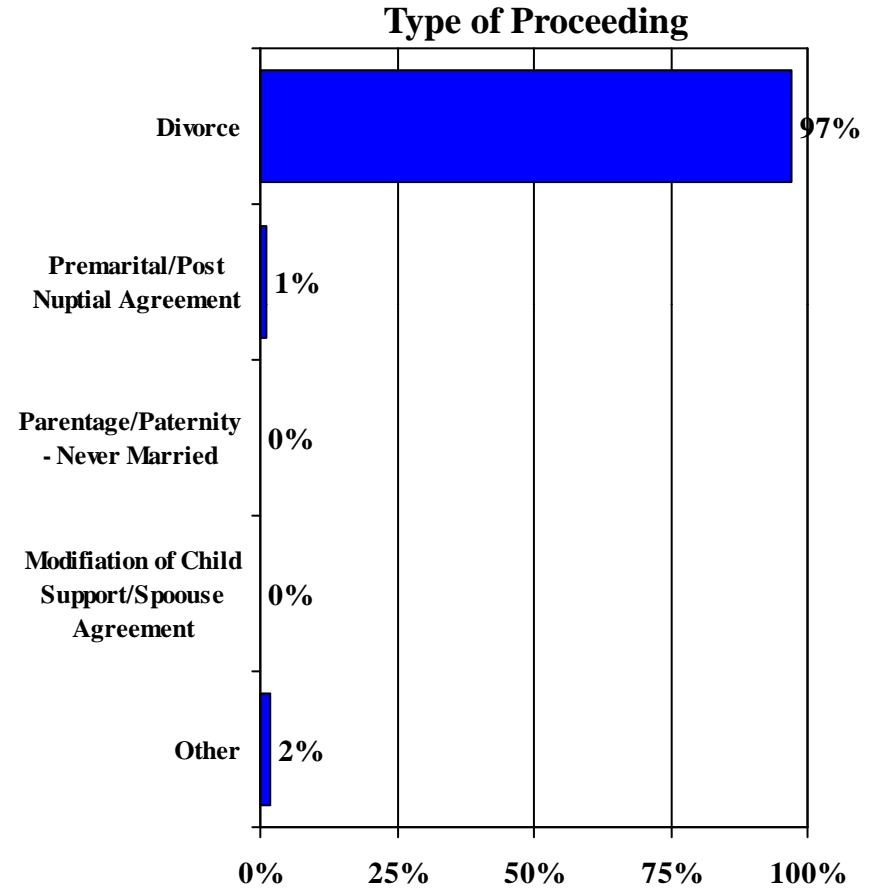
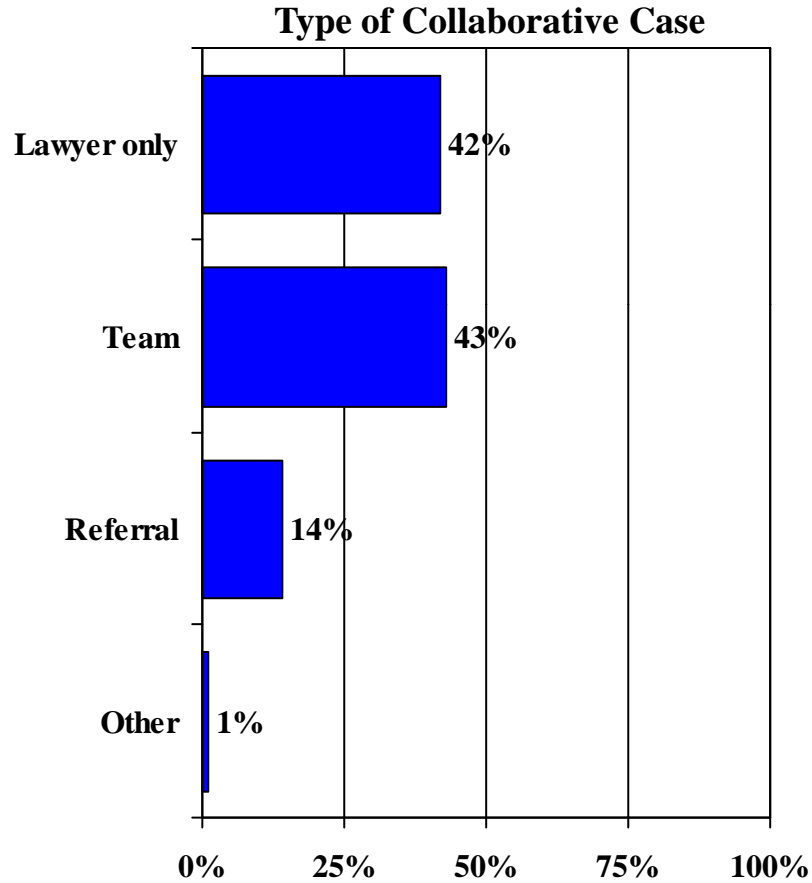


Case Information



Case Information

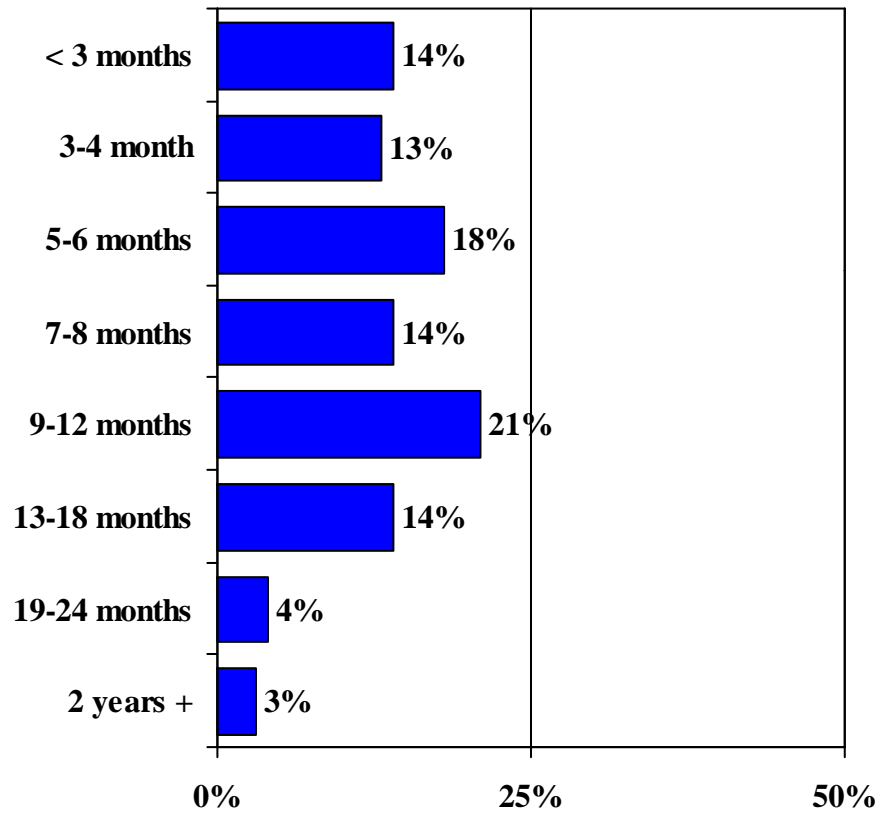
Type of Collaborative Case and Proceeding



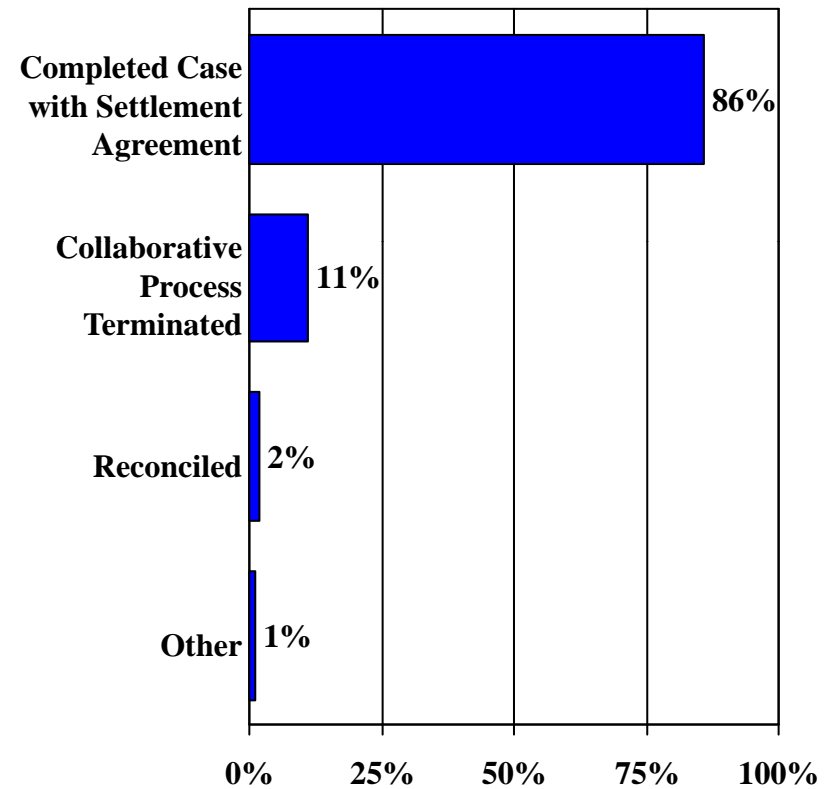
Case Information

Time to Complete Case and Outcome of Case

Length of Time in Months



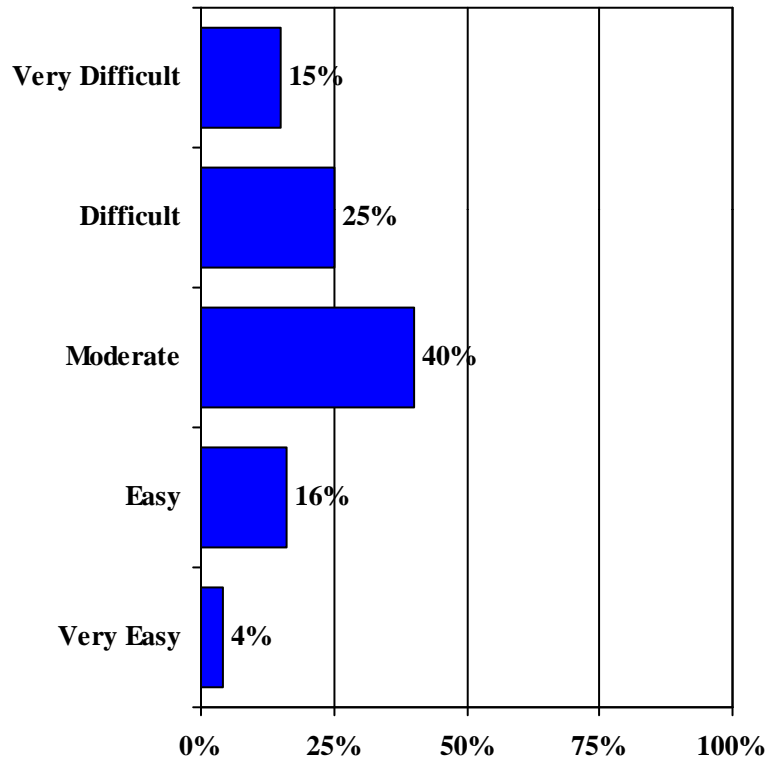
Outcome of Case



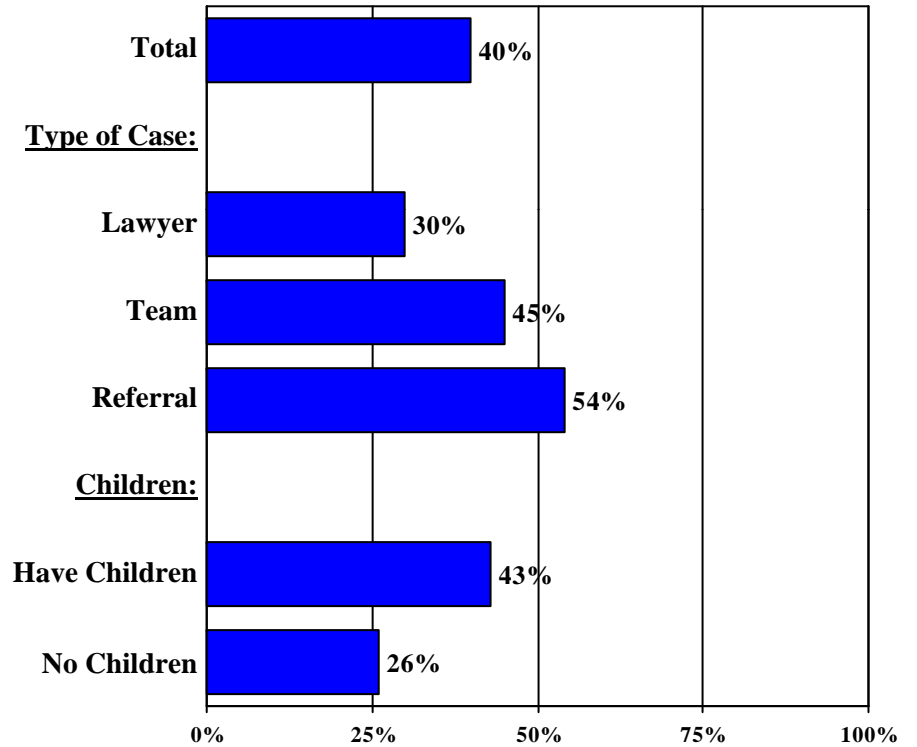
Case Information

Case Difficulty

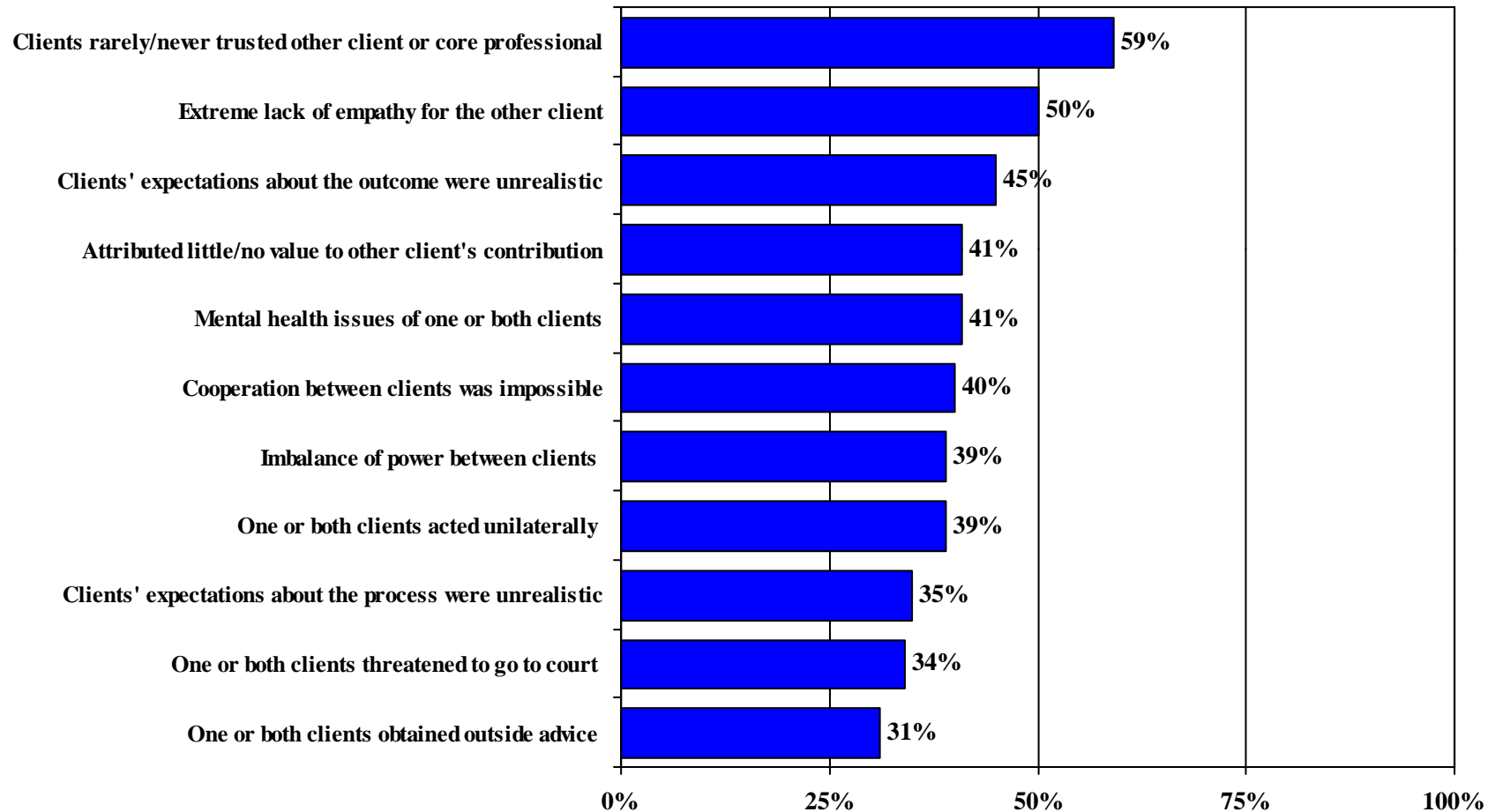
Overall Difficulty Rating



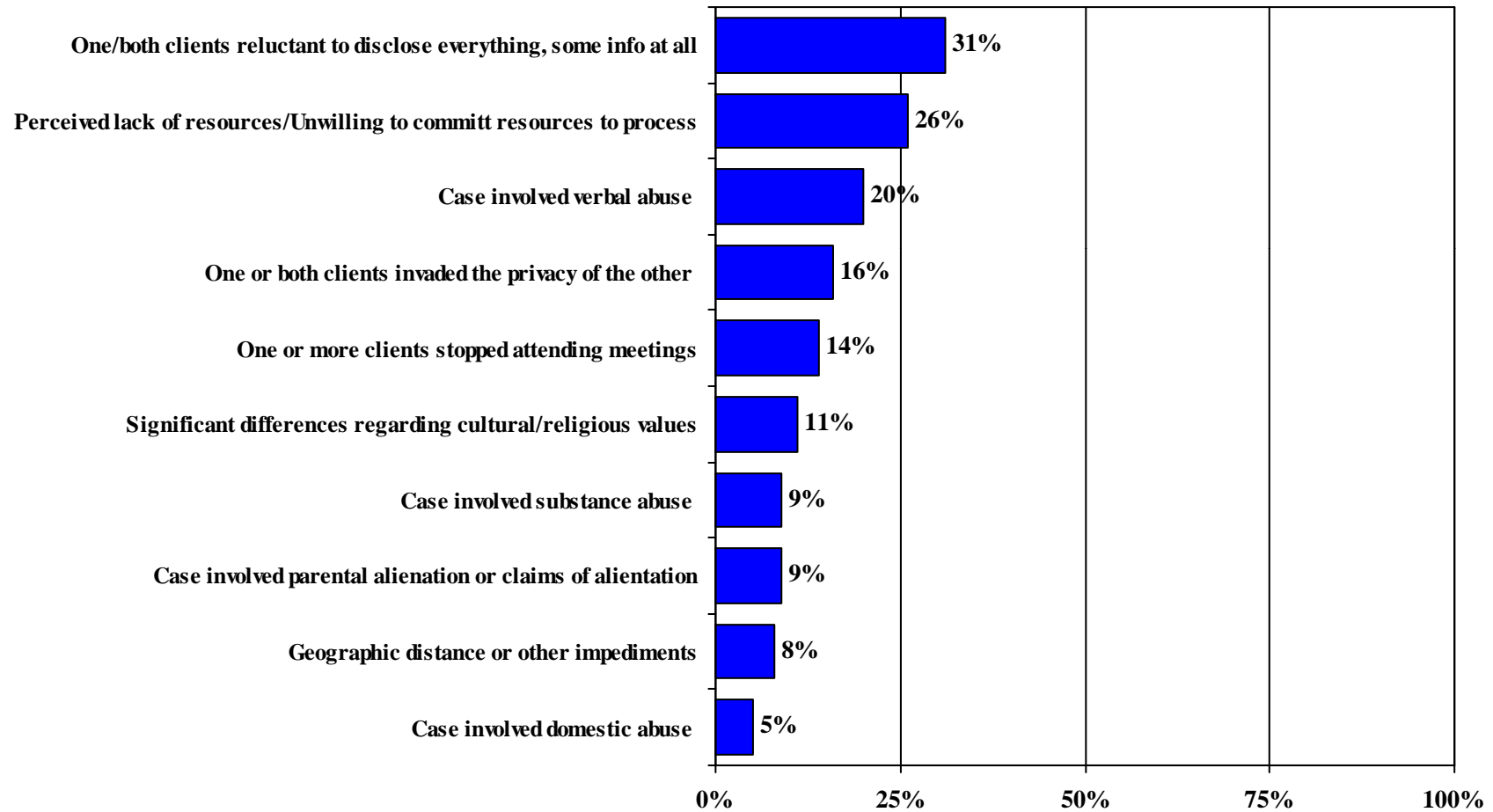
Percent Rating Case as Difficult or Very Difficult



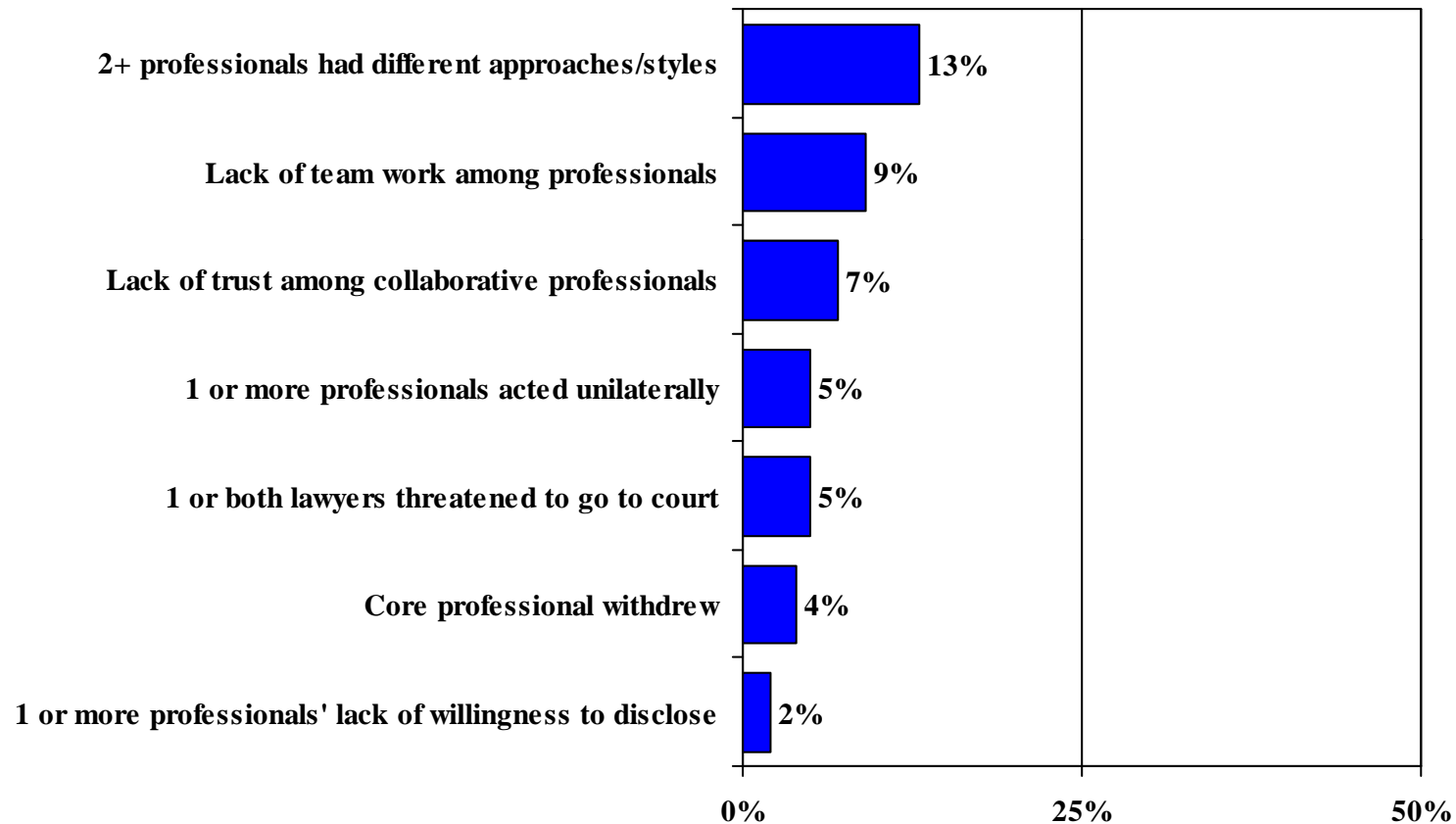
Professionals' Perspectives of the Client/Family/Dynamics That Caused the Case to Terminate or Made it Difficult: First Set of Reasons



Professionals' Perspectives of the Client/Family/Dynamics That Caused the Case to Terminate or Made it Difficult: Second Set of Reasons

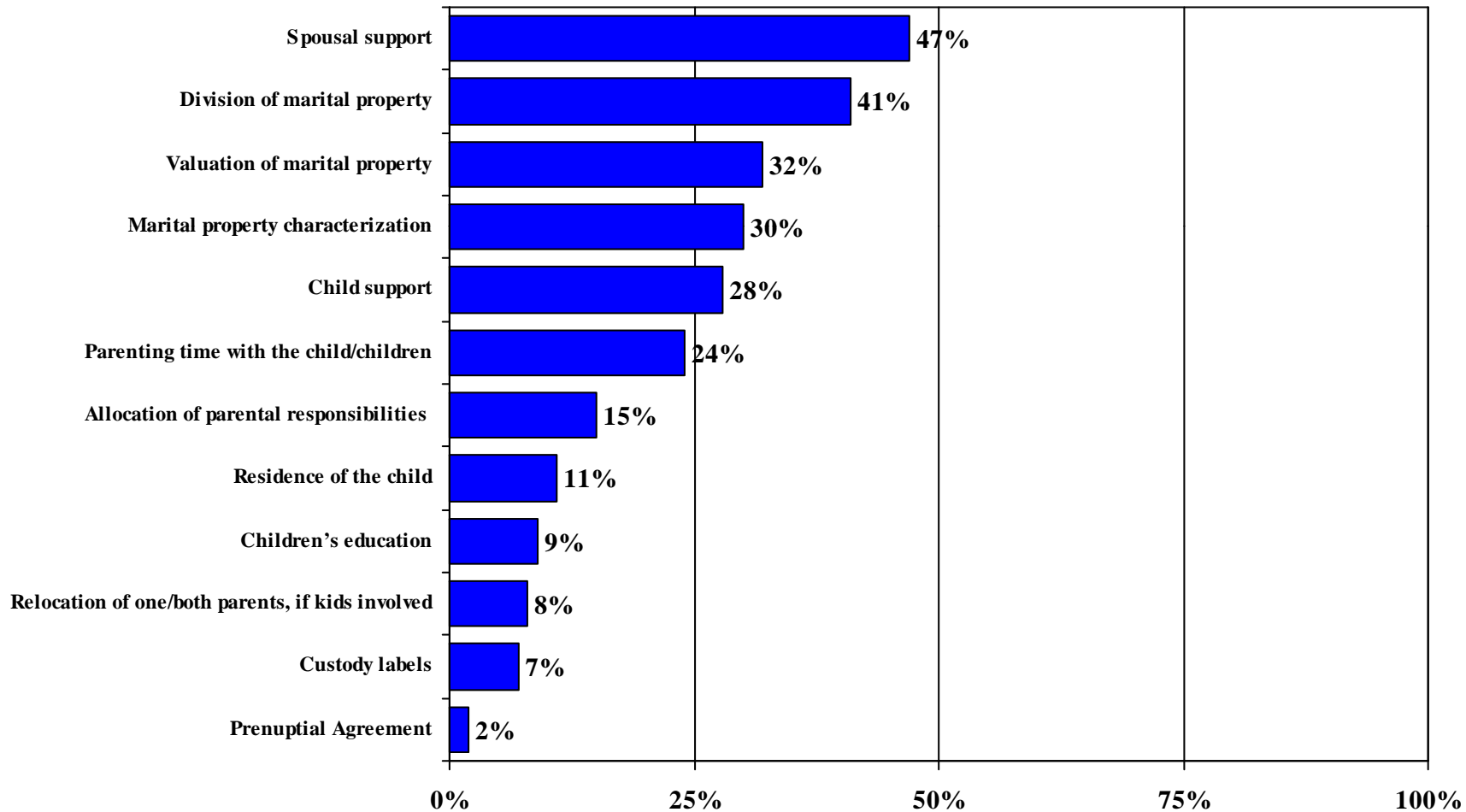


Professionals' Perspectives of the Professionals' Behavior That Caused the Case to Terminate or Made it Difficult



Case Information

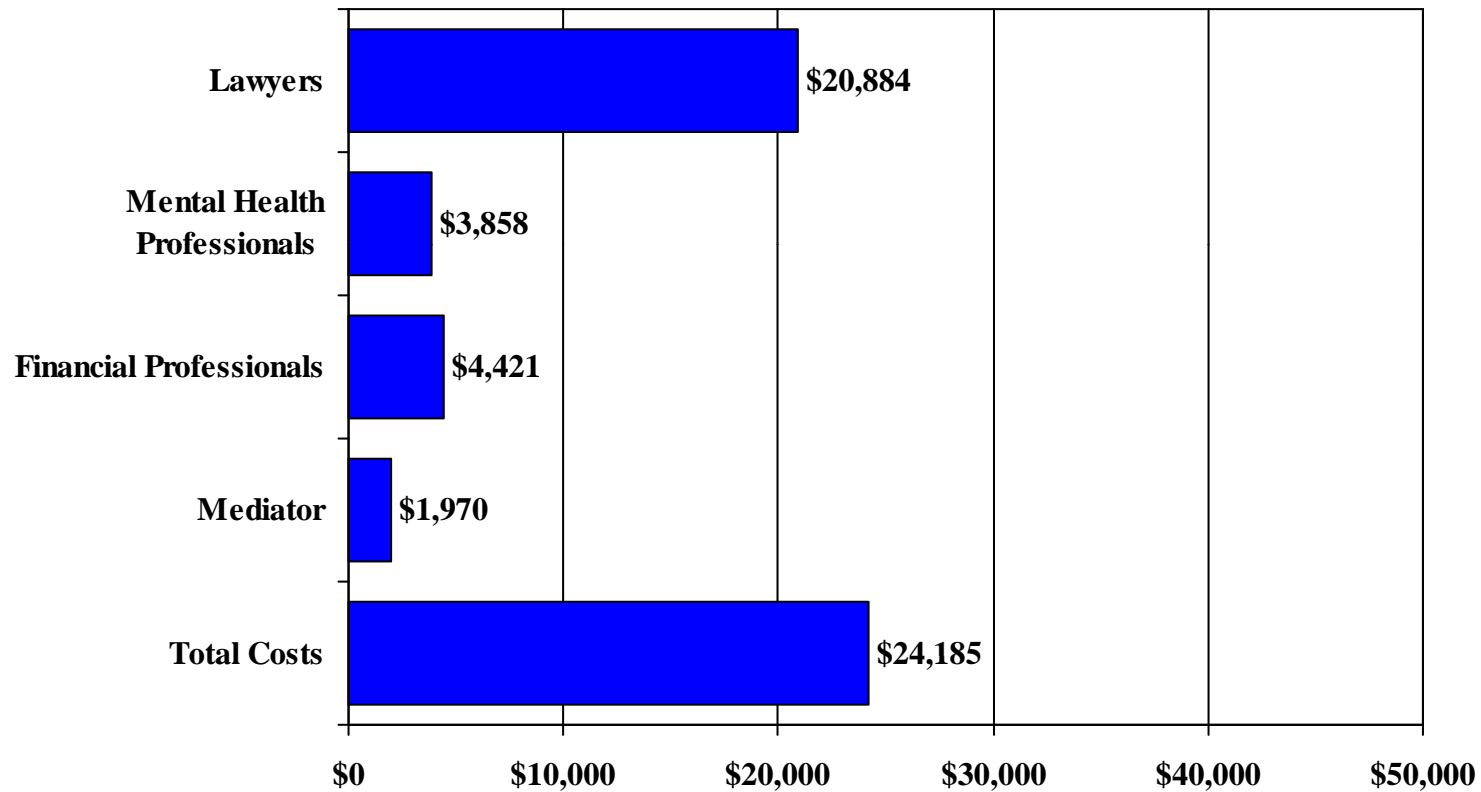
Complex or Substantive Issues That Caused The Case to Terminate or Made it Difficult



Case Information

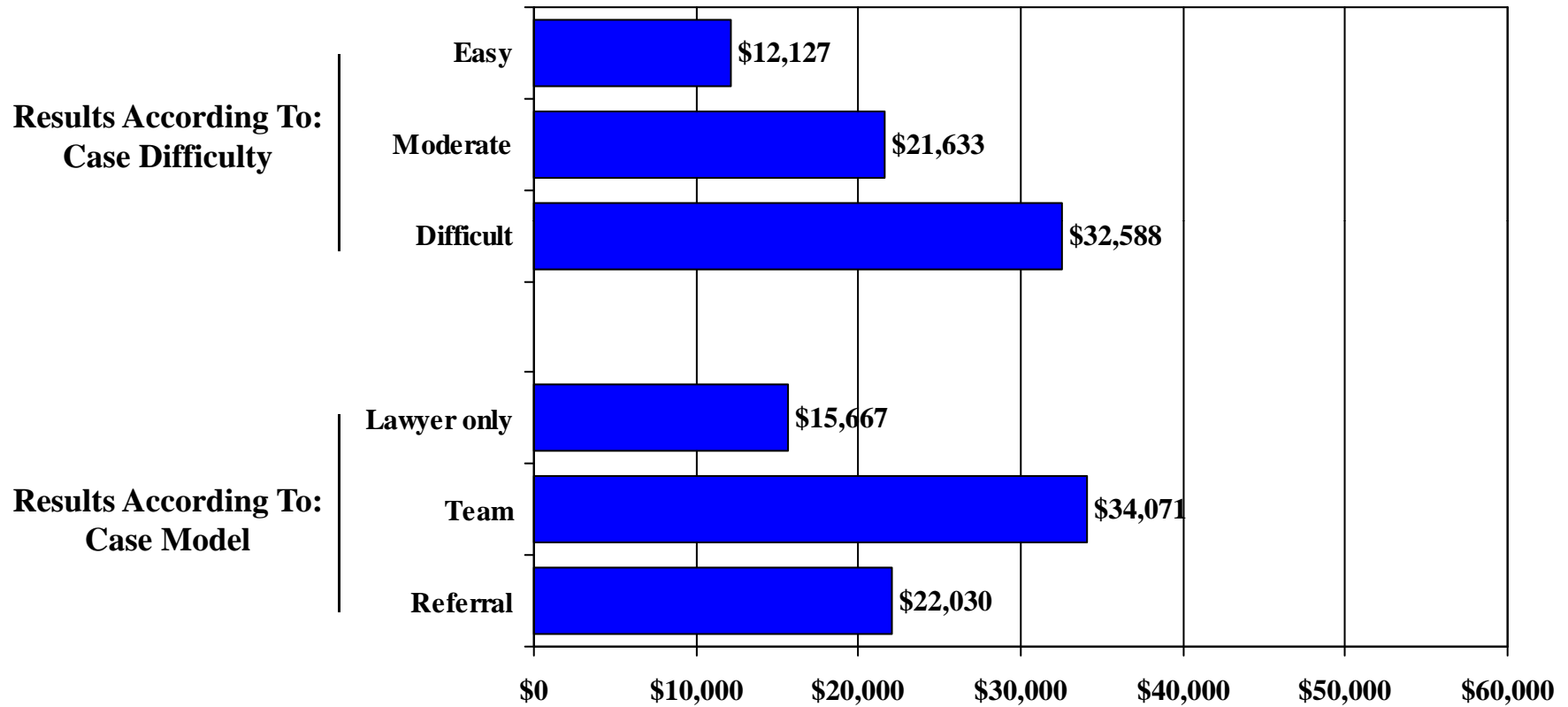


Average Total Cost of Collaborative Case



Note: Total Costs may not add to sum of professionals as some cases did not use all professionals.

Analysis of Average Total Cost of Collaborative Case



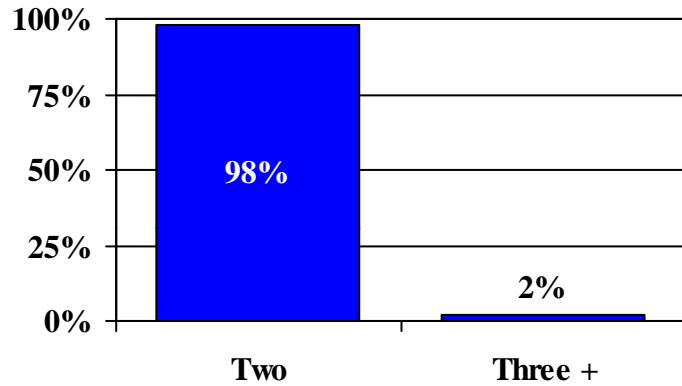


Collaborative Case Professionals

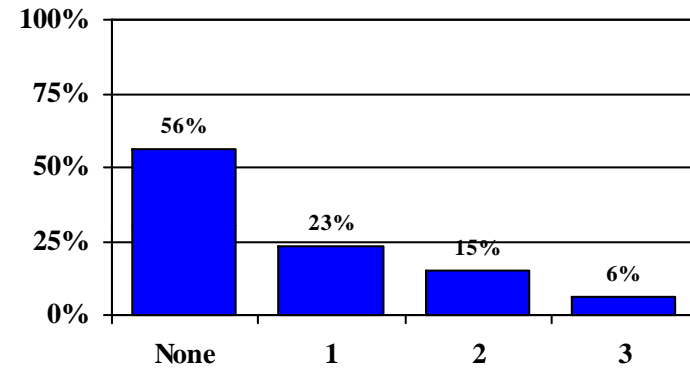


Core Professionals Involved In Case

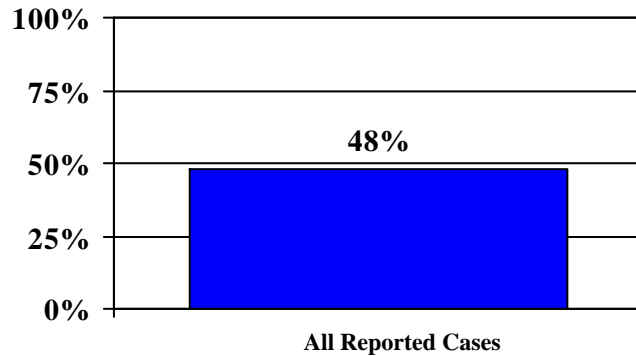
Number of Lawyers



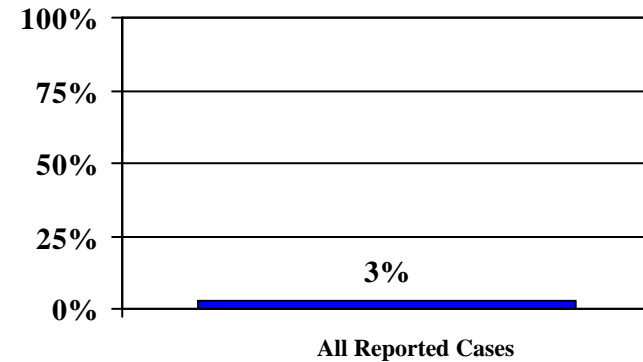
Number of Mental Health Professionals



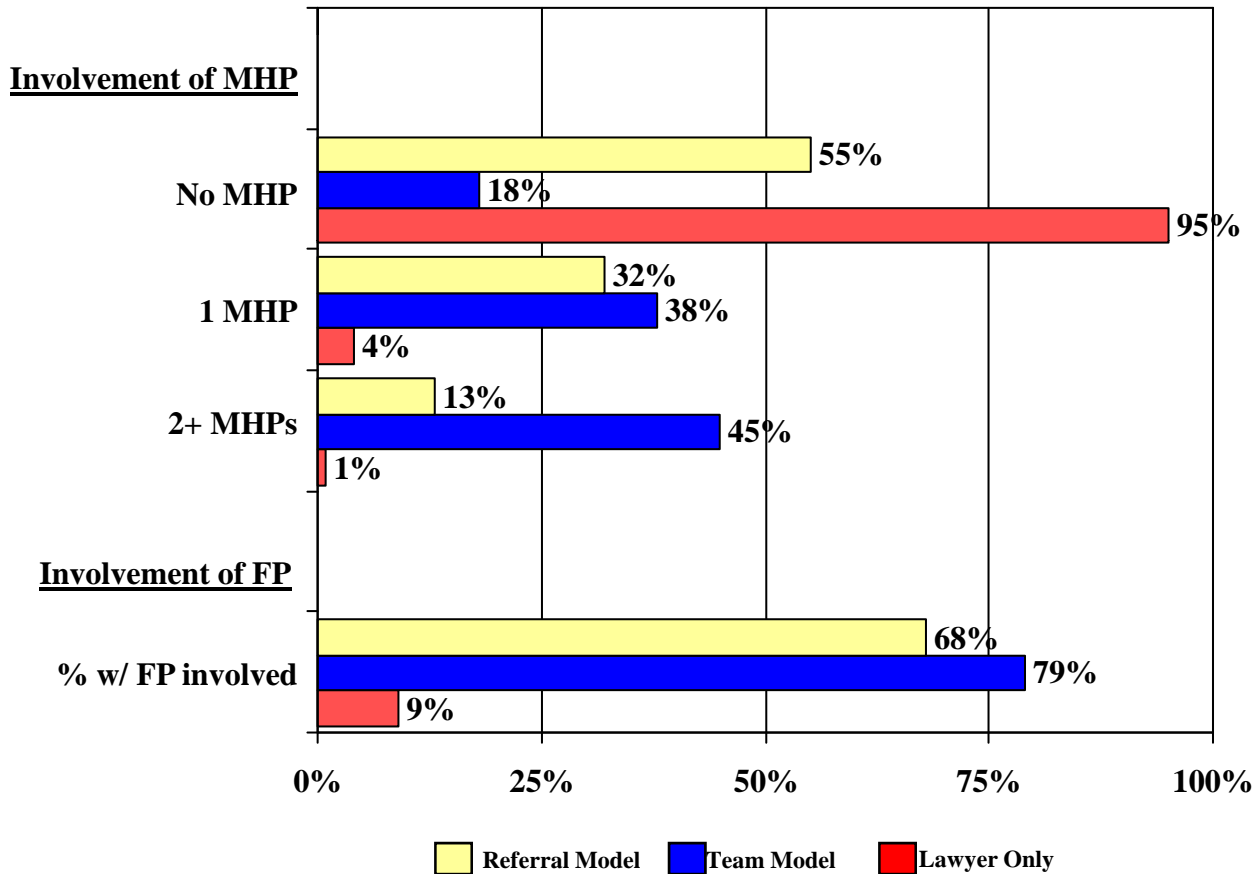
% of Cases With A Financial Professional Involved



% of Cases With A Mediator Involved



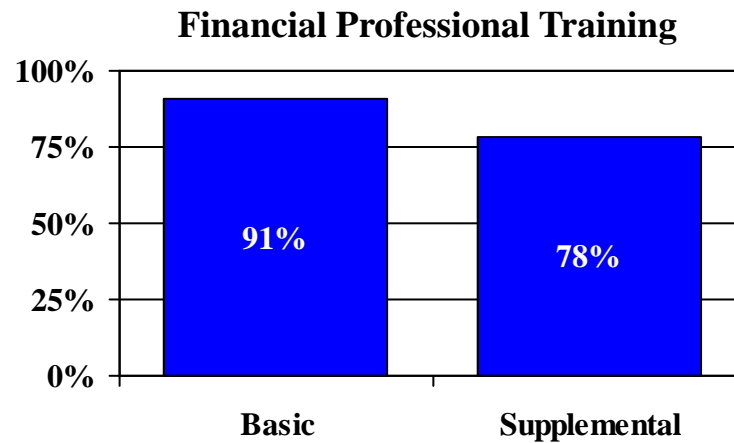
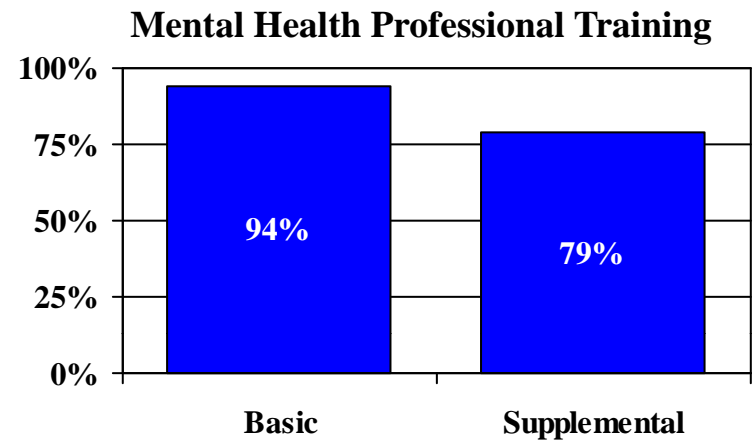
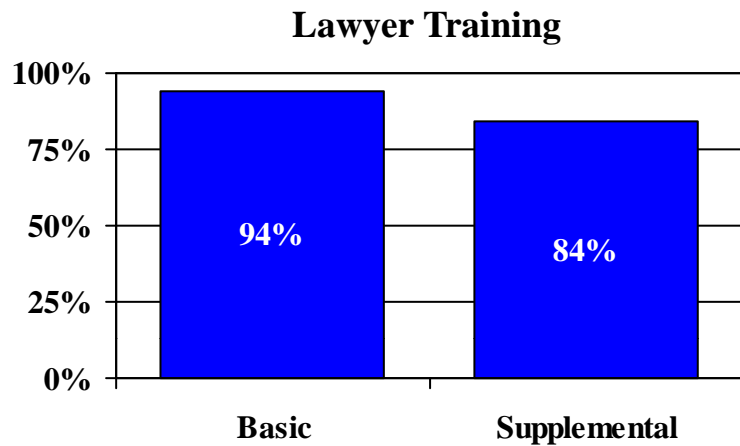
Core Professionals Involved In Case - Analysis According to Model Used -



Collaborative Case Professionals



Collaborative Training Received

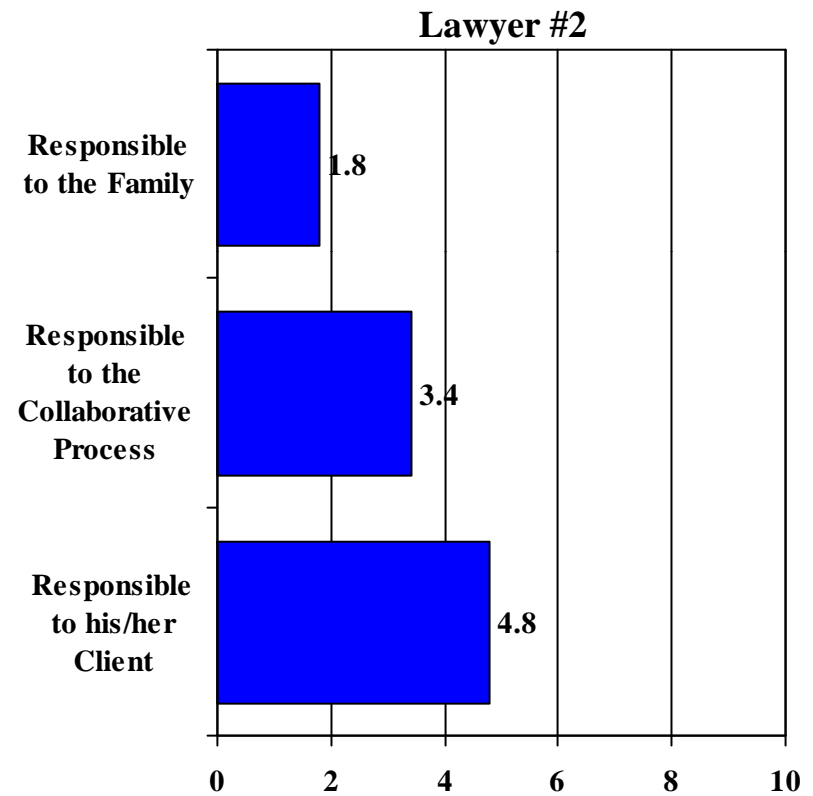
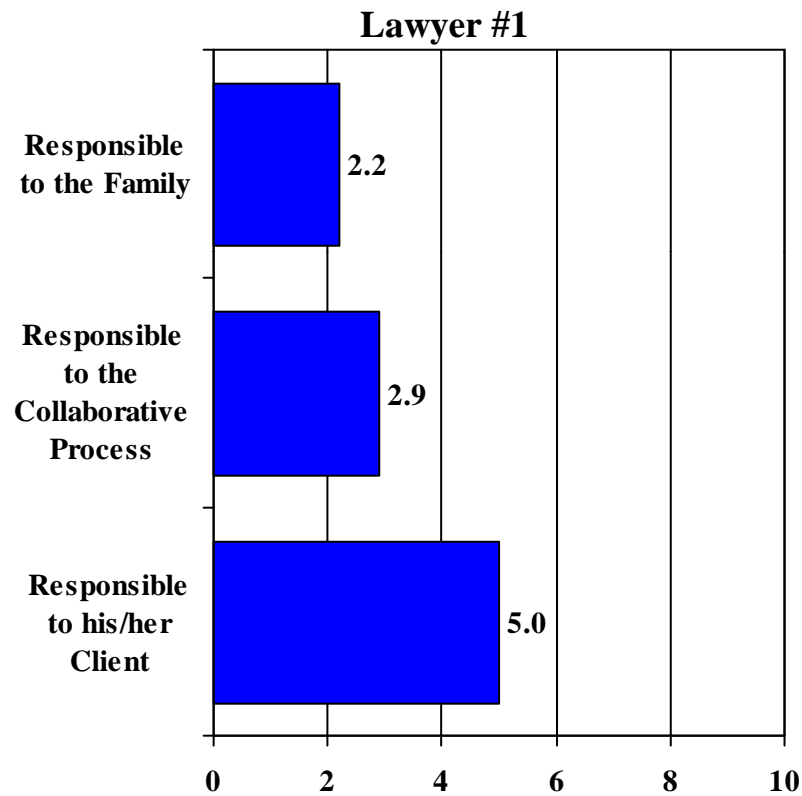


Collaborative Case Professionals

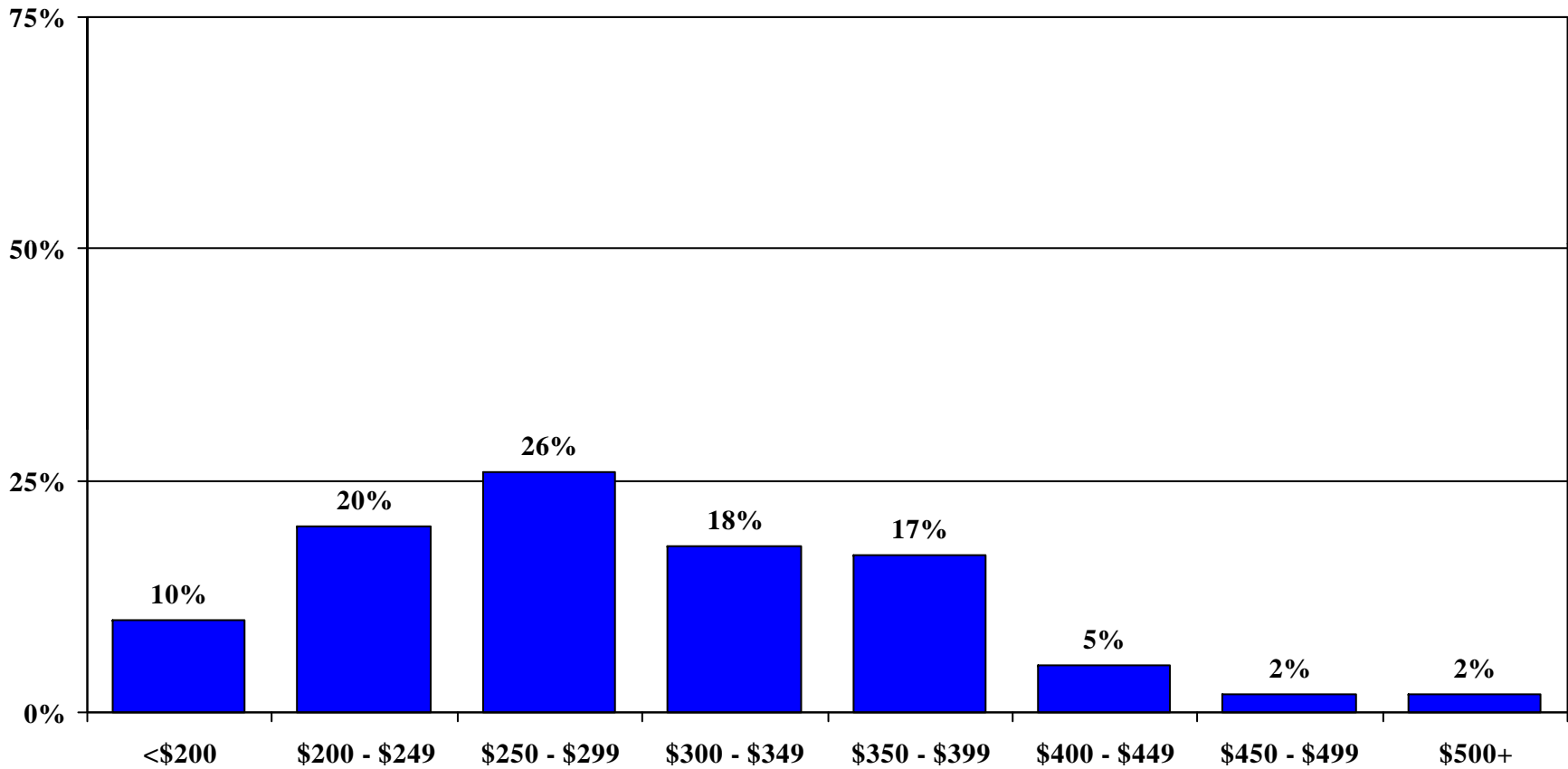


Average of Lawyers' View of Responsibility

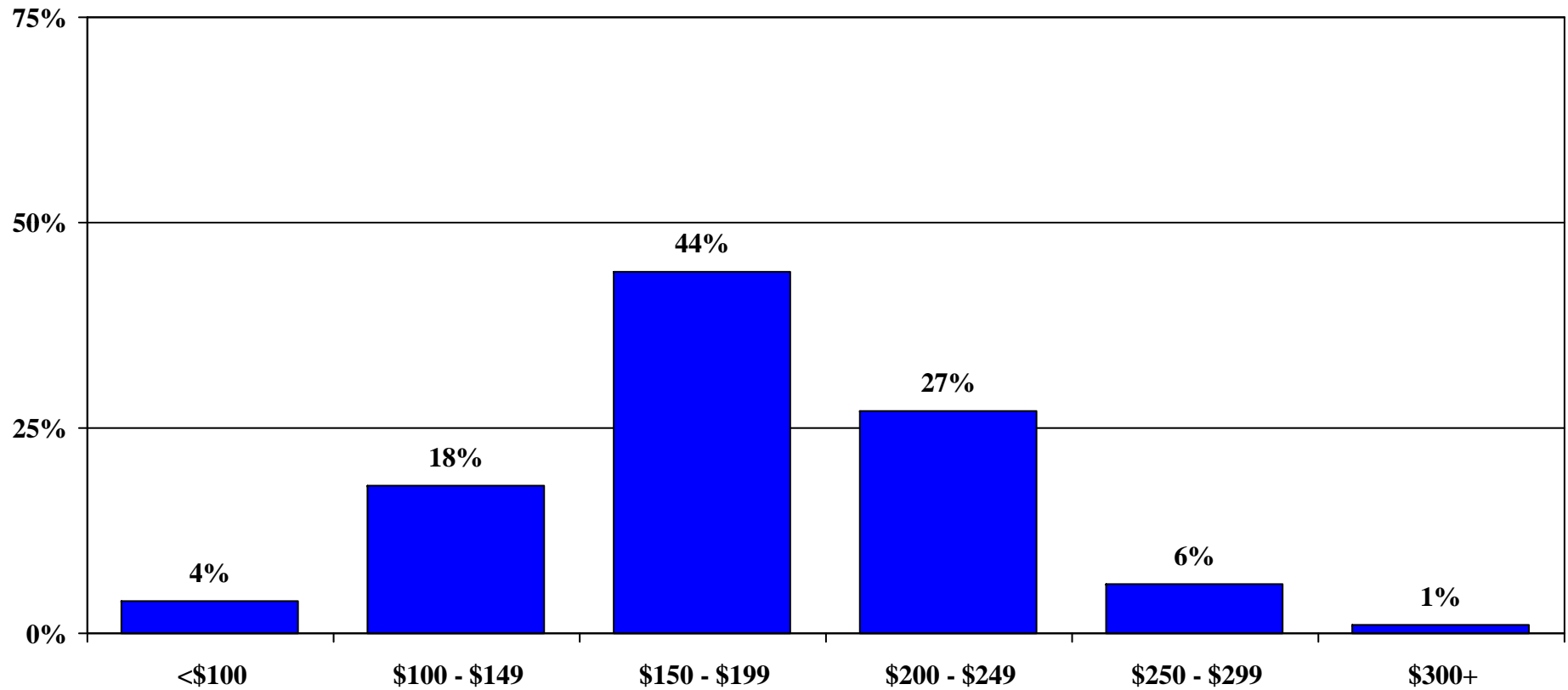
How Lawyers Allocate 10 Points According To Their Perceived Responsibility



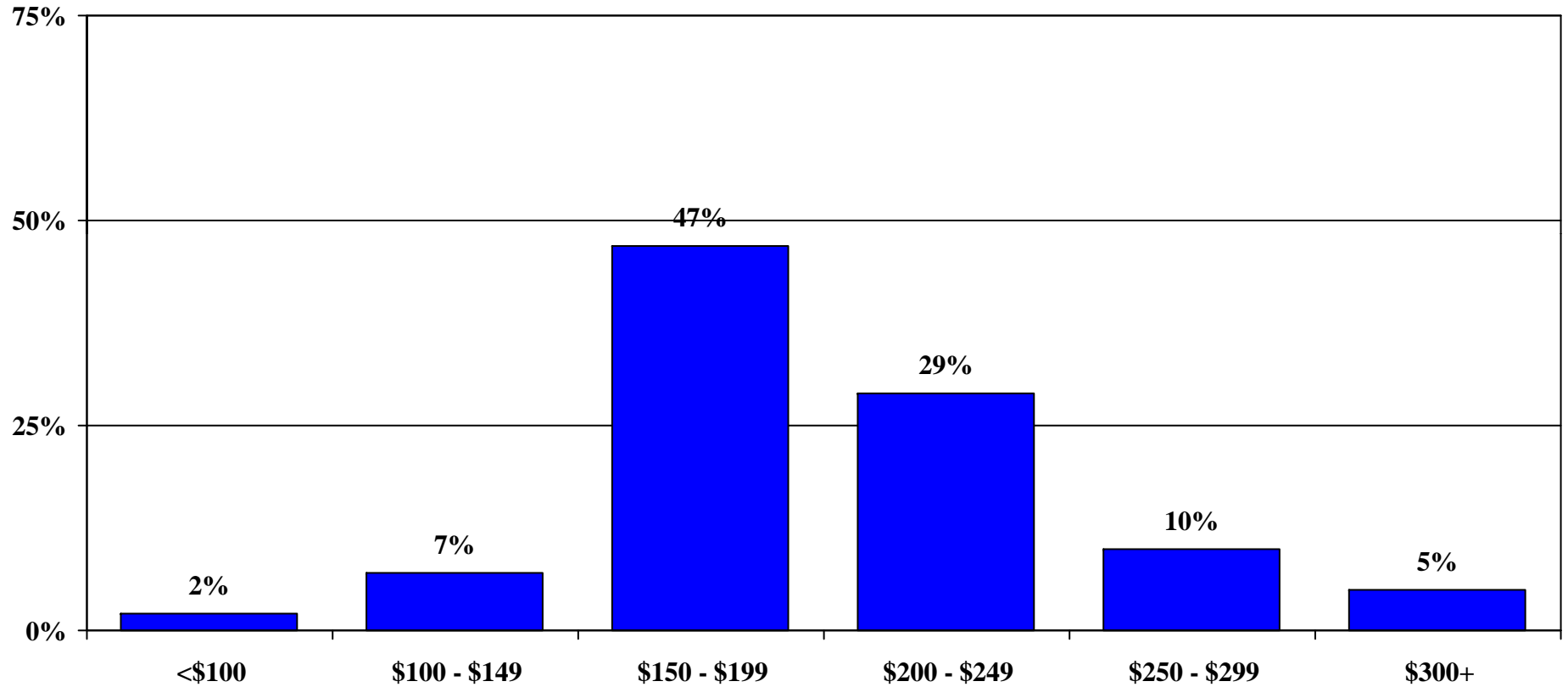
Hourly Fees for All Lawyers Combined



Hourly Fees for All Mental Health Professionals Combined



Hourly Fees for Financial Professional

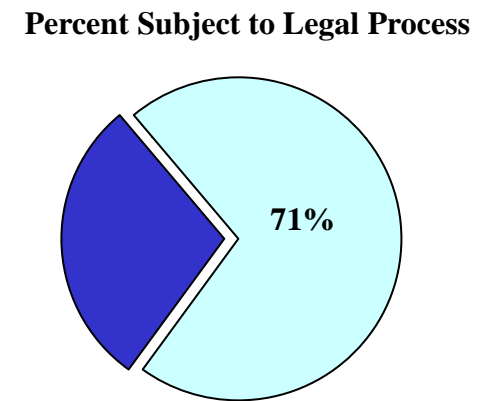
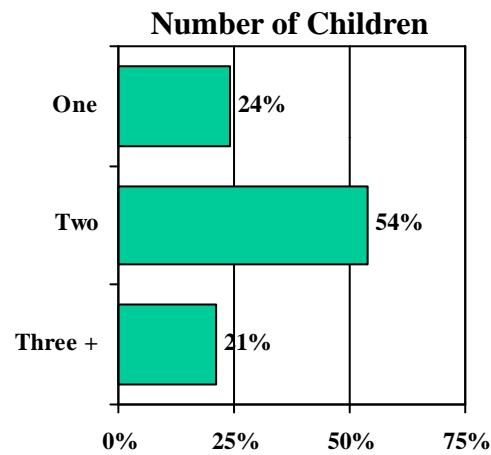
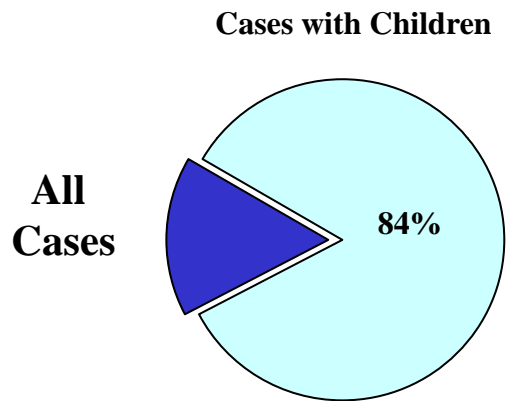




Children

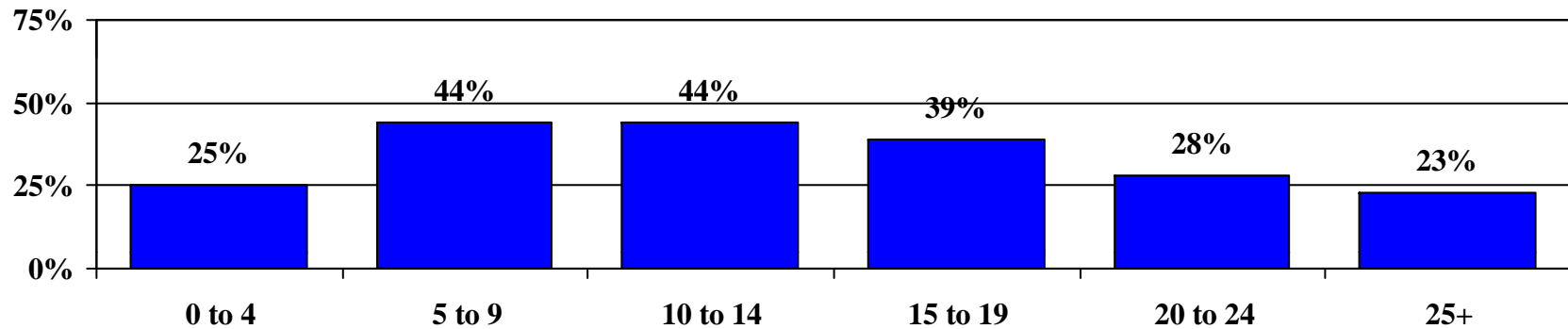


Cases Involving Children

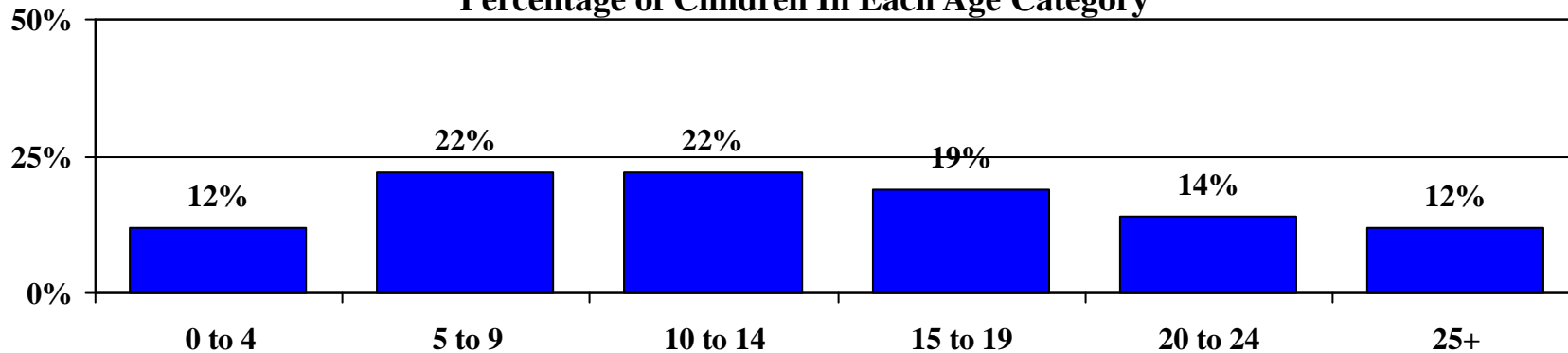


Children's Ages – All Children

Percentage of Households with Children In Each Age Category



Percentage of Children In Each Age Category



Base: Households with children



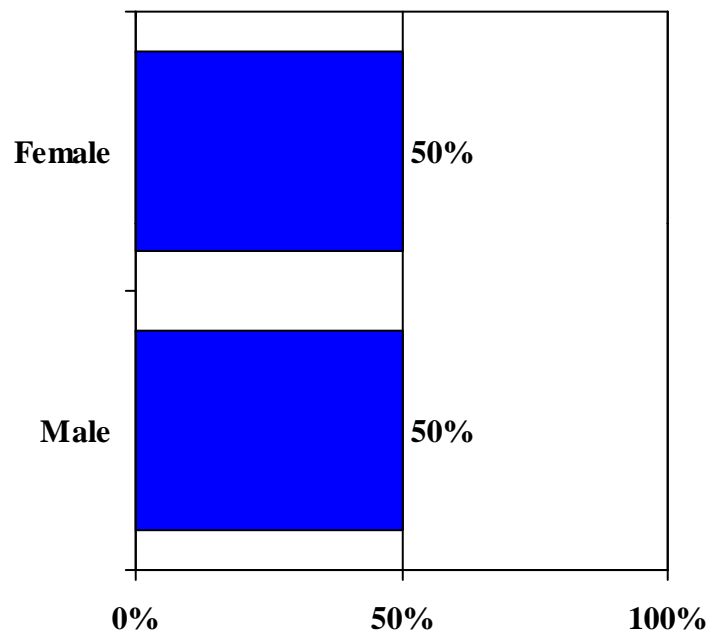
Participant Demographic Profile



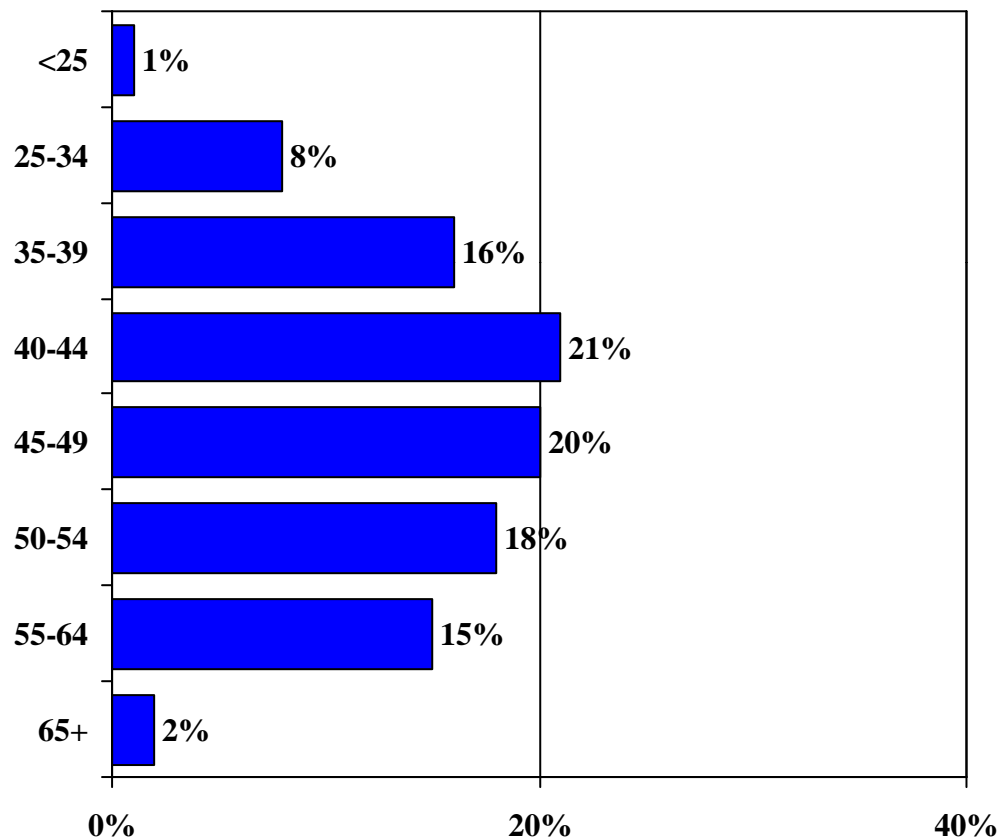
Participant Demographic Profile

Gender and Age: All Participants

Gender

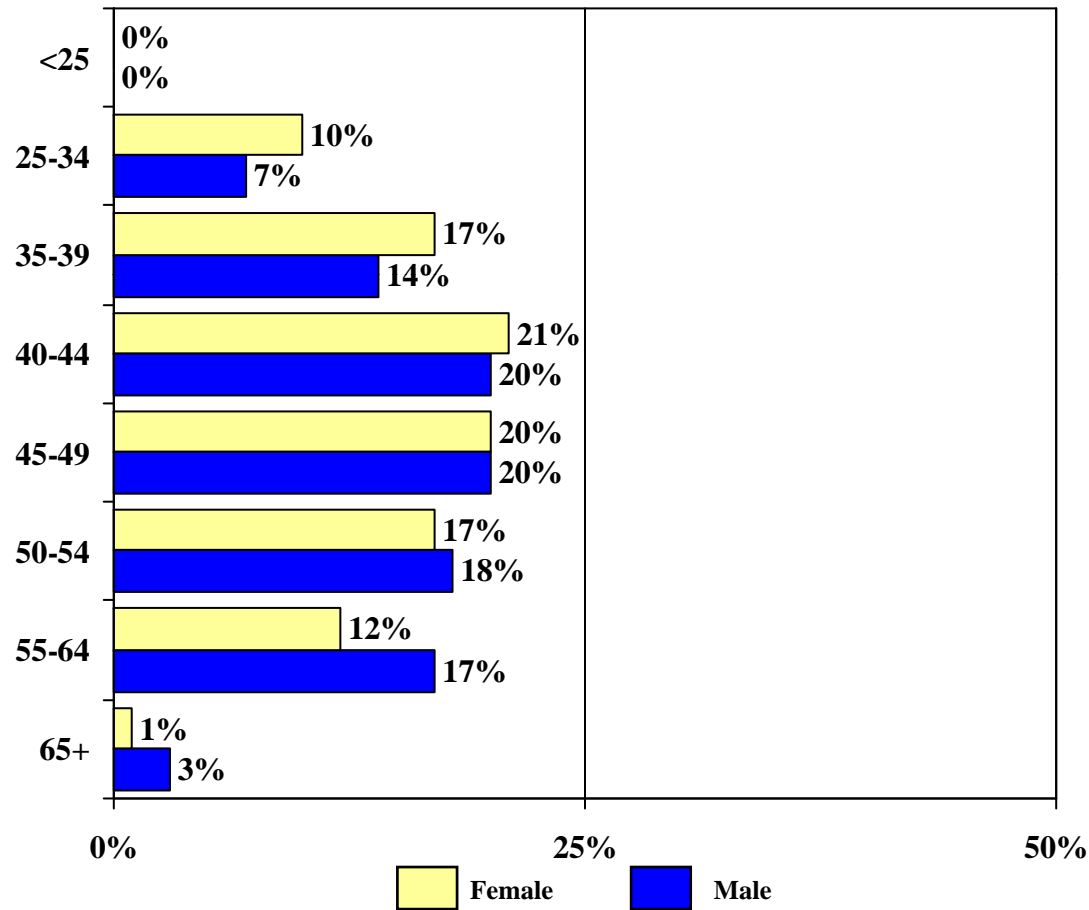


Participant Age



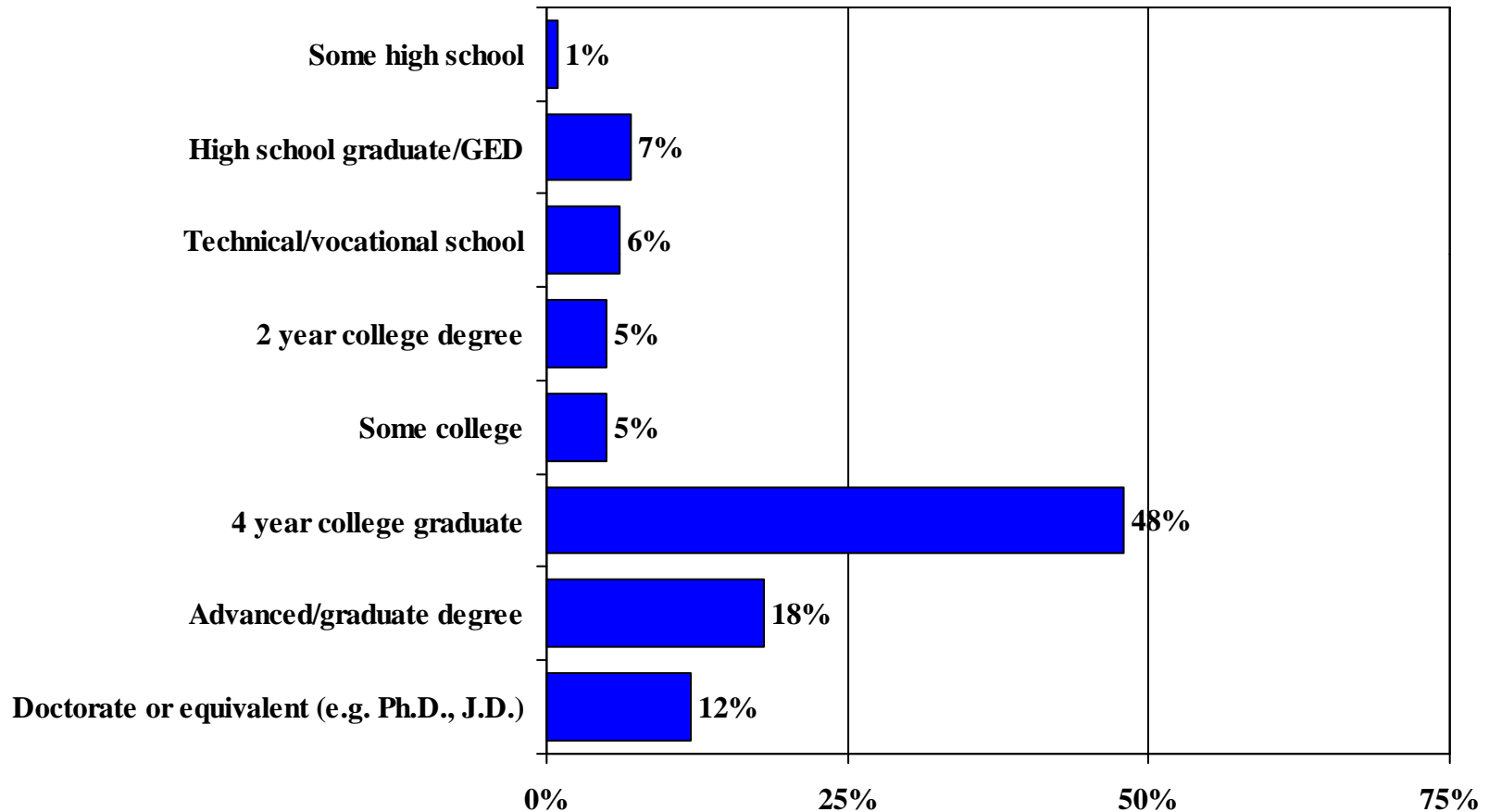
Participant Demographic Profile

Participant Age According to Gender



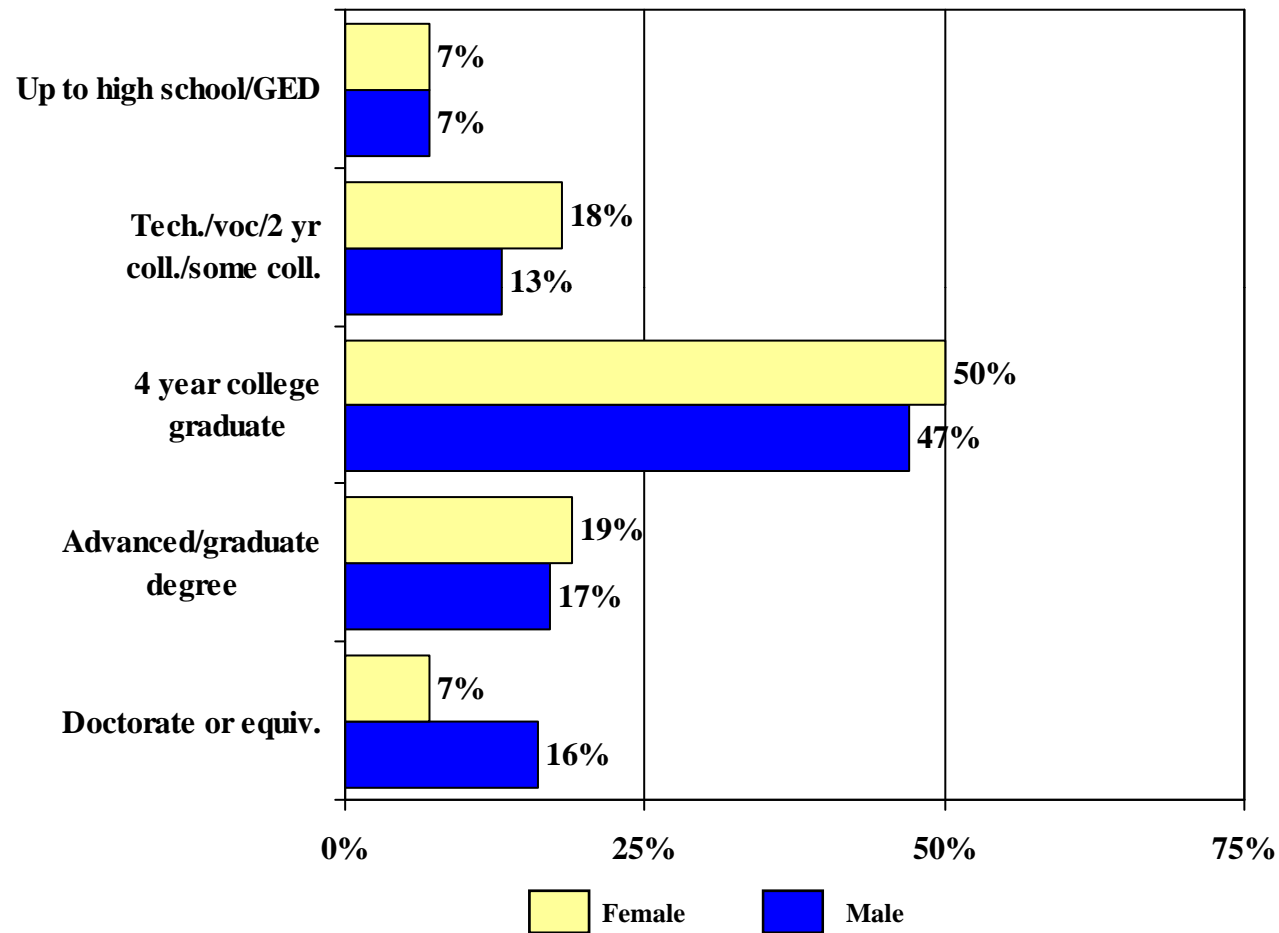
Participant Demographic Profile

Education Level: All Participants



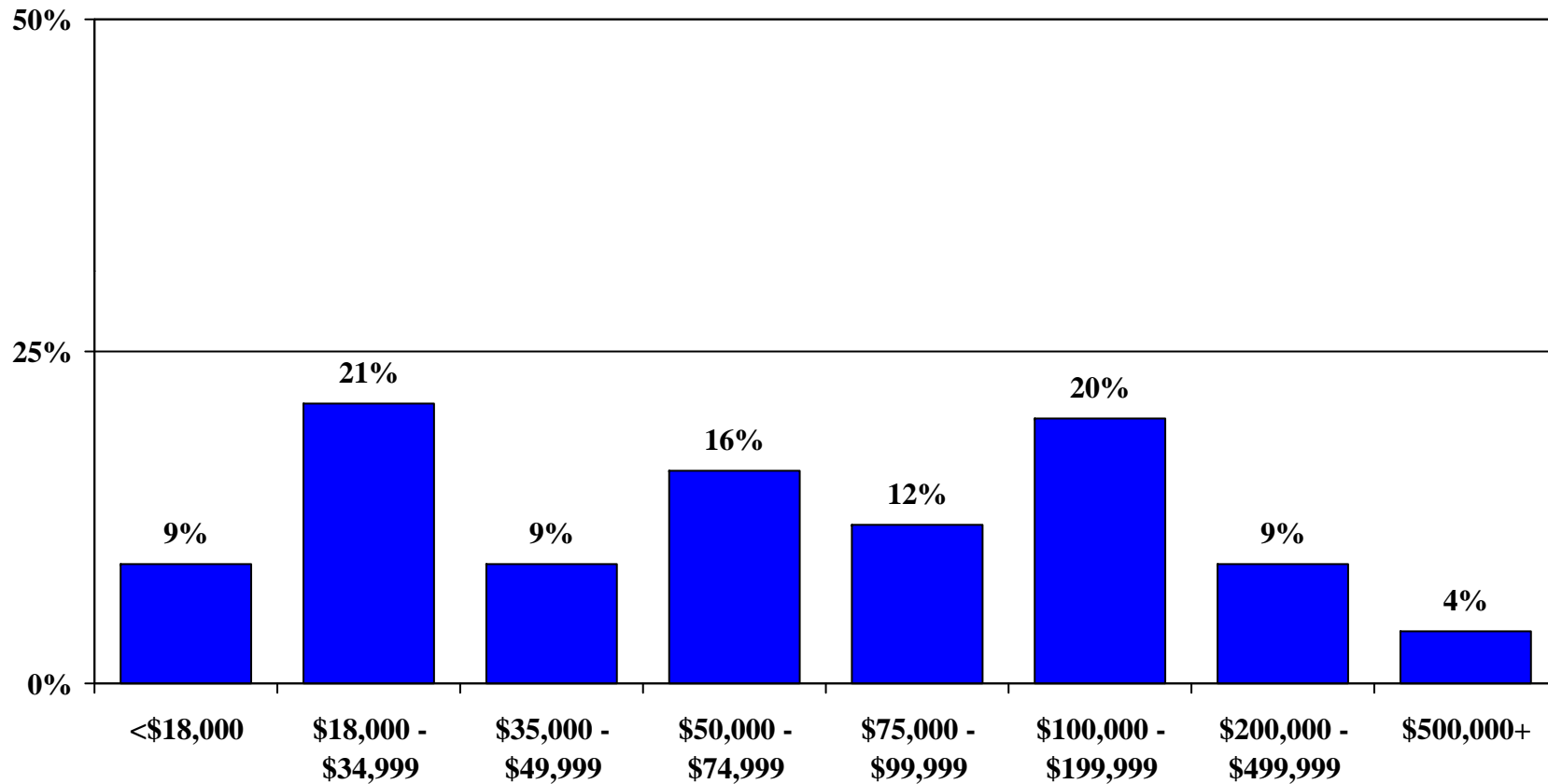
Participant Demographic Profile

Participant Education According to Gender



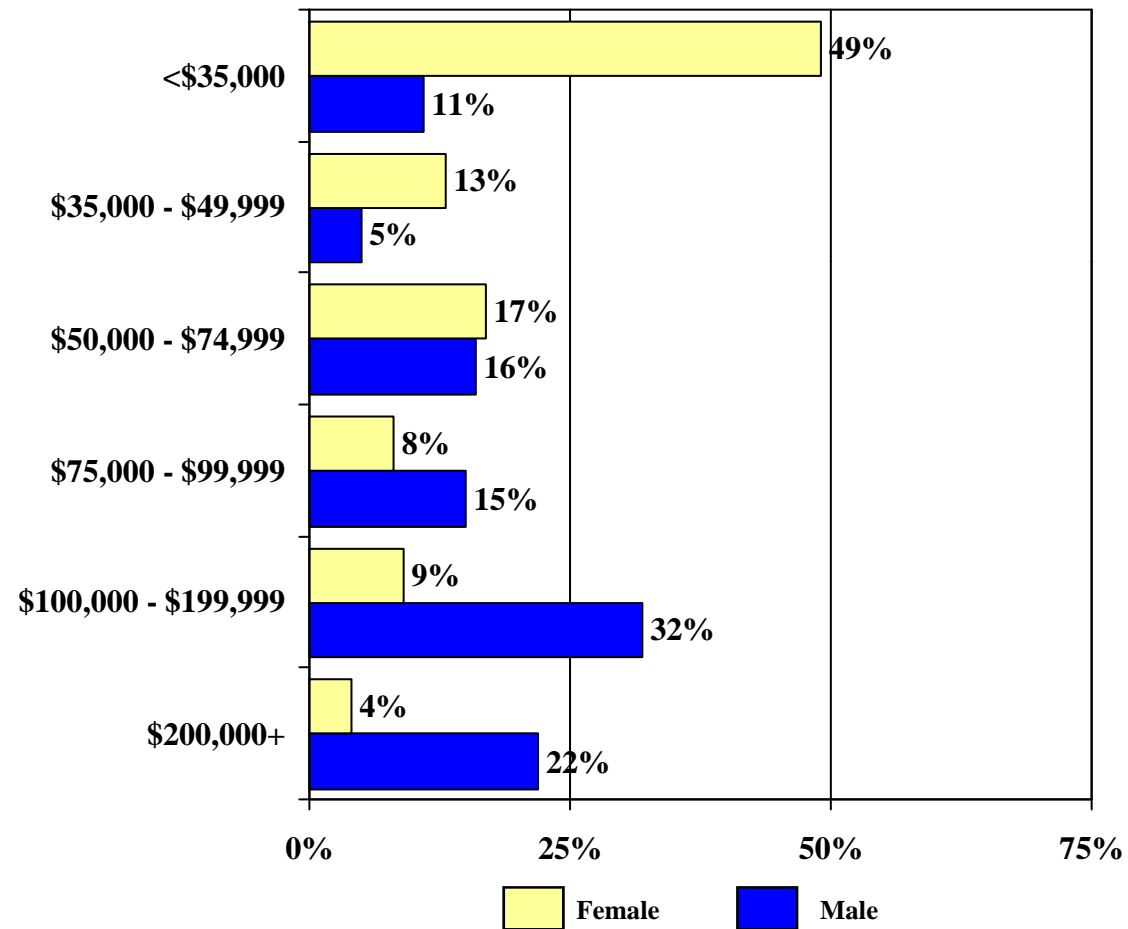
Participant Demographic Profile

Pre-Tax Income: All Participants



Participant Demographic Profile

Participant Pre-Tax Income According to Gender



Participant Demographic Profile

Total Value of Estate

